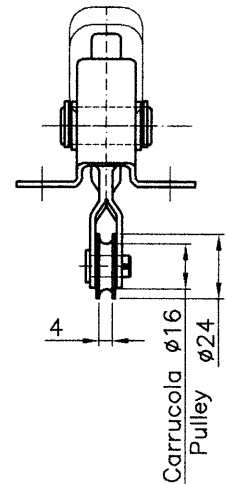
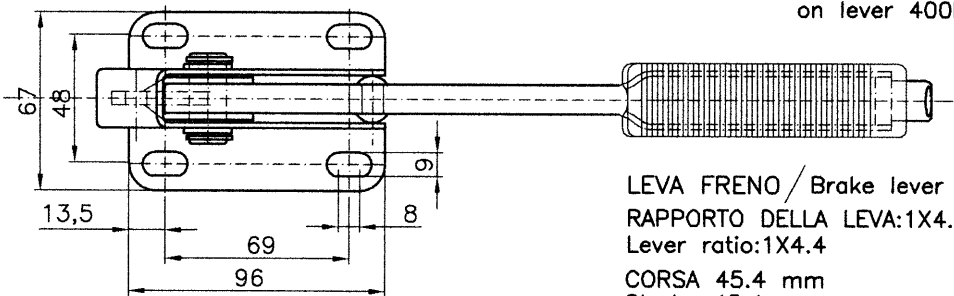


Forza massima applicabile 400N
Max force on lever 400N



Carrucola $\phi 16$
Pulley $\phi 24$



LEVA FRENO / Brake lever
RAPPORTO DELLA LEVA: 1X4.4
Lever ratio: 1X4.4
CORSA 45.4 mm
Stroke 45.4 mm

Protezione superficiale-zincatura gialla
(a richiesta verniciatura a polveri di colore nero).
Eventuali personalizzazioni su disegno del cliente.

Superficial protection yellow zinc-plated
(available on request black epoxy coating).
We're also able to arrange special
products according to customer's drawing.

Cod. 10.116.01
Cremagliera libera
Rack free