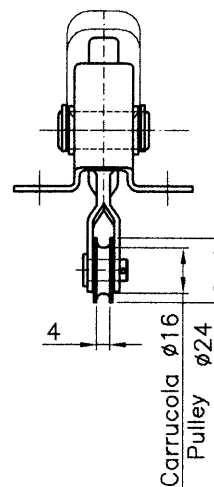
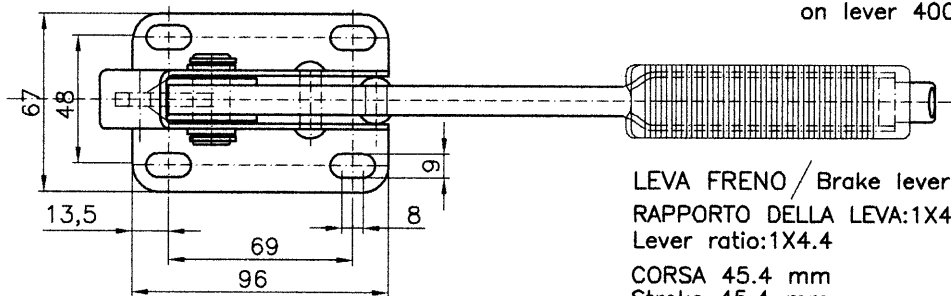


Forza massima applicabile 400N  
Max force on lever 400N



Carrucola  $\phi 16$   
Pulley  $\phi 24$



LEVA FRENO / Brake lever  
RAPPORTO DELLA LEVA: 1X4.4  
Lever ratio: 1X4.4  
CORSA 45.4 mm  
Stroke 45.4 mm

Cod. 10.116.02  
Cremagliera  
fissa  
Rack Lock

Protezione superficiale-zincatura gialla  
(a richiesta verniciatura a polveri di colore nero).  
Eventuali personalizzazioni su disegno del cliente.

Superficial protection yellow zinc-plated  
(available on request black epoxy coating).  
We're also able to arrange special  
products according to customer's drawing.